

# EMPLOYMENT, INCENTIVES AND IMMIGRATION

---

An elite team



---

*By delivering what clients want wherever they need it, from high value strategic advice, to the everyday, Addleshaw Goddard prides itself on a service which is high quality, focused, relevant and consistently excellent*

---

CHAMBERS UK, 2016







---

*Their advice is clear, concise and directly answers the questions raised. I have every confidence in the advice they provide*

---

HR DIRECTOR, FTSE 100 COMPANY

# CONTENTS

OUR TEAM	3
OUR GLOBAL REACH	4
OUR SERVICES	6
Employment	6
Employee incentives	7
Immigration and international mobility	9
OUR SECTOR EXPERTISE	10
EXPERTISE YOU CAN RELY ON	12

# OUR TEAM

Our Employment, Incentives and Immigration group has a first class reputation. We offer a complete service covering the full range of employment, employee incentives and business immigration law issues.

In the UK we offer national coverage with offices in London, Manchester, Leeds, Aberdeen, Edinburgh and Glasgow. Our reach extends globally through our international offices, strategic alliances and preferred firm networks.

Our group is made up of expert lawyers, including many market-leading individuals. We offer clients innovative solutions through the use of technology, training and flexible resourcing.

*Innovative  
solutions*







## OUR GLOBAL REACH

We pride ourselves on offering a truly global service through a combination of our office network, formal alliances and preferred firm networks.


Complementing our strong UK presence, we have offices in Hamburg, Dubai, Hong Kong, Oman, Qatar and Singapore.

We build on this through our comprehensive preferred firm networks:

-  **Europe** - relationships with leading firms in each of 21 jurisdictions
-  **USA and Canada** - relationships with a network of leading firms covering each region of the USA and Canada
-  **South America** - our relationship with key firms offers coverage across the continent
-  **Rest of the World** - relationships with leading independent firms in their respective markets

We are also proud to belong to the Employment Law Alliance, the world's largest network of employment lawyers, covering 120 countries, all 50 US states and every Canadian province and rated as an elite global-wide network by Chambers Global Guide.



A hand is holding a globe of the Earth. Overlaid on the globe is a network of black dots connected by thin black lines, representing a global communication or data network. The background is a blurred cityscape with a tall building visible on the right.

*Addleshaws is a firm  
with great people.  
They're very responsive  
and are able to provide  
practical solutions to  
complex problems*

CHAMBERS UK 2017

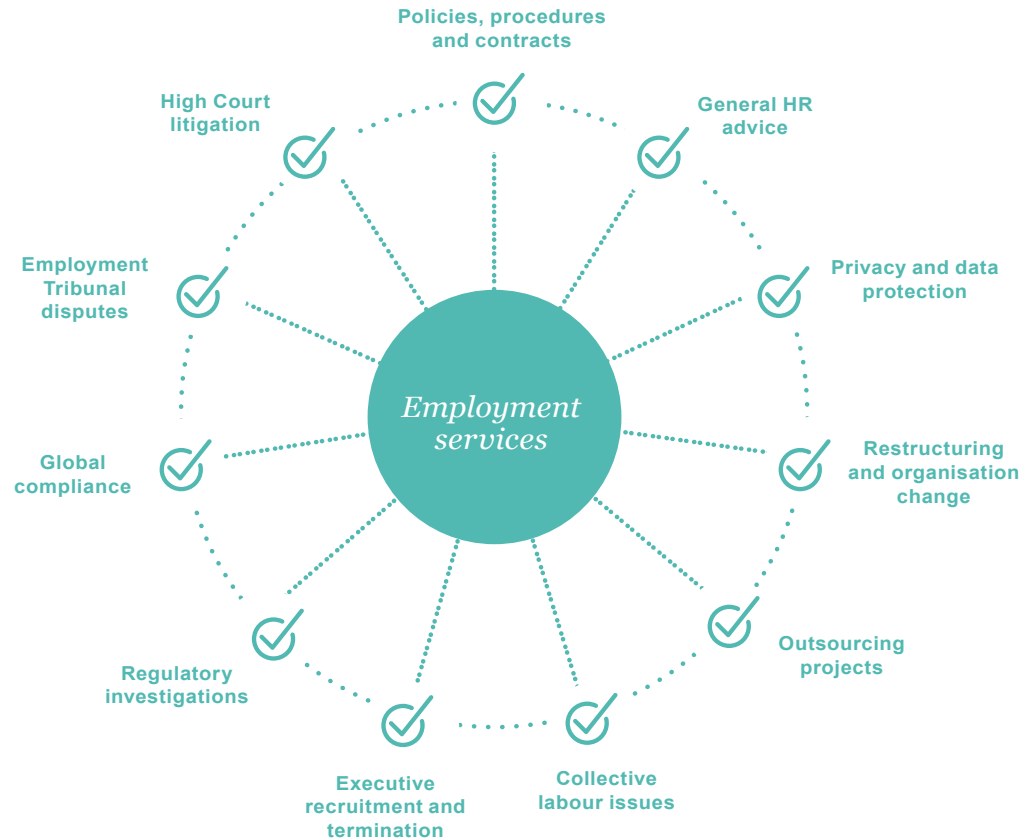
# OUR SERVICES

---

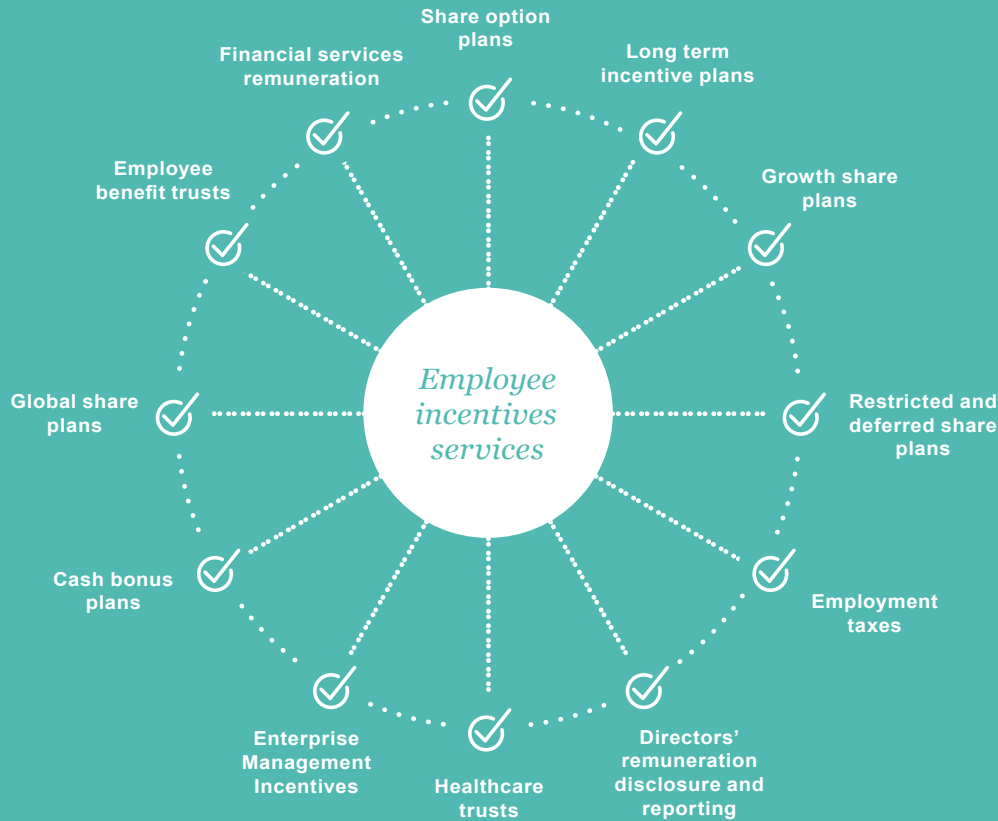
*Their litigation  
work is Magic  
Circle quality, at  
an affordable rate*

---

CHAMBERS UK, 2016








---

*Extremely proactive and knowledgeable and noted for its highly professional manner*

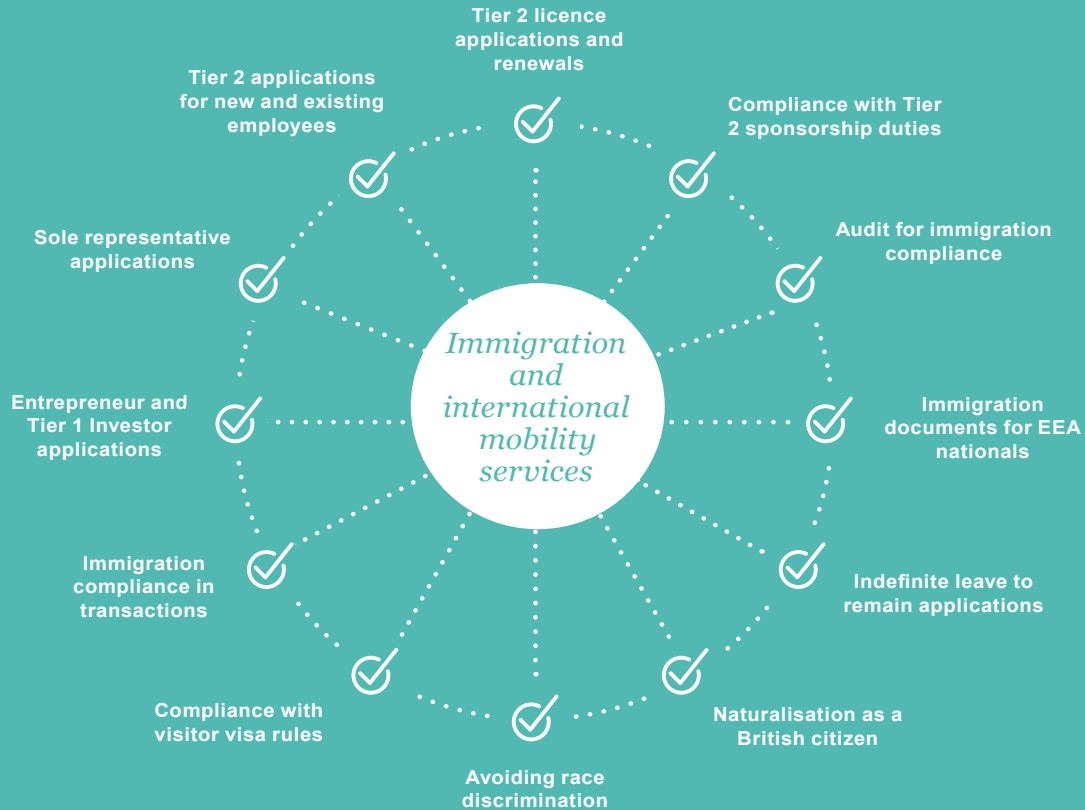
---

LEGAL 500, 2016



*I have no hesitation in recommending Addleshaw Goddard's Employment team. They are always at the end of a phone, deal with matters swiftly and professionally, talk in plain English and find pragmatic solutions that allow us to move forward*

OWNER OF NATIONAL PROPERTY DEVELOPMENT AND INVESTMENT GROUP



## OUR SECTOR EXPERTISE



Digital and  
media



Energy and  
Utilities



Financial  
Services



Industrials



Real Estate



Health




Transport



Retail and  
consumer





*They have a range of excellent skills and a collective knowledge of financial services that is outstanding*

CHAMBERS UK, 2016

*The team have a deep understanding of both our company and the sector, so it is easy to have sector type conversations*

MAJOR FMCG CLIENT

# EXPERTISE YOU CAN RELY ON

MICHAEL LEFTLEY

Partner and Head of Group, Employment

---

+44 (0)20 7788 5079

michael.leftley@addleshawgoddard.com



ALASDAIR SIMPSON

Consultant, Employment

---

+44 (0)20 7788 5129

alasdair.simpson@addleshawgoddard.com



RICHARD YEOMANS

Partner, Employment

---

+44 (0)20 7788 5351

richard.yeomans@addleshawgoddard.com



SARAH HARROP

Partner, Employment & Immigration

---

+44 (0)20 7788 5057

sarah.harrop@addleshawgoddard.com



MALCOLM PIKE

Partner, Employment

---

+44 (0)161 934 6443

malcolm.pike@addleshawgoddard.com



SALLY HULSTON

Partner, Employment

---

+44 (0)113 209 7740

sally.hulston@addleshawgoddard.com



JONATHAN FLETCHER ROGERS  
Partner, Incentives

---

+44 (0)20 7160 3001  
jonathan.fletcherrogers@  
addleshawgoddard.com



DAVID HUGHES  
Partner

---

+44 (0)131 222 9837  
david.hughes@addleshawgoddard.com



KIM PATTULLO  
Partner

---

+44 (0)131 222 9556  
kim.pattullo@addleshawgoddard.com



---

*Addleshaw Goddard is more than just a firm of exceptional lawyers. It is also a leader in client investment and understanding. It is proud to act for its clients, whatever the scale of their requirements*

---

LEGAL 500

addleshawgoddard.com

---

Aberdeen, Doha, Dubai, Edinburgh, Glasgow, Hamburg, Hong Kong, Leeds, London, Manchester, Muscat, Singapore  
and Tokyo\*

\* a formal alliance with Hashidate Law Office

© 2019 Addleshaw Goddard LLP. All rights reserved. Extracts may be copied with prior permission and provided their source is acknowledged. This document is for general information only. It is not legal advice and should not be acted or relied on as being so, accordingly Addleshaw Goddard disclaims any responsibility. It does not create a solicitor-client relationship between Addleshaw Goddard and any other person. Legal advice should be taken before applying any information in this document to any facts and circumstances. Addleshaw Goddard is an international legal practice carried on by Addleshaw Goddard LLP (a limited liability partnership registered in England & Wales and authorised and regulated by the Solicitors Regulation Authority and the Law Society of Scotland) and its affiliated undertakings. Addleshaw Goddard operates in the Dubai International Financial Centre through Addleshaw Goddard (Middle East) LLP (registered with and regulated by the DFSA), in the Qatar Financial Centre through Addleshaw Goddard (GCC) LLP (licensed by the QFCA), in Oman through Addleshaw Goddard (Middle East) LLP in association with Nasser Al Habsi & Saif Al Mamari Law Firm (licensed by the Oman Ministry of Justice), in Hamburg through Addleshaw Goddard (Germany) LLP (a limited liability partnership registered in England & Wales) and in Hong Kong through Addleshaw Goddard (Hong Kong) LLP, a Hong Kong limited liability partnership pursuant to the Legal Practitioners Ordinance and regulated by the Law Society of Hong Kong. In Tokyo, legal services are offered through Addleshaw Goddard's formal alliance with Hashidate Law Office. A list of members/ principals for each firm will be provided upon request. The term partner refers to any individual who is a member of any Addleshaw Goddard entity or association or an employee or consultant with equivalent standing and qualifications. If you prefer not to receive promotional material from us, please email us at [unsubscribe@addleshawgoddard.com](mailto:unsubscribe@addleshawgoddard.com). For further information, including about how we process your personal data, please consult our website [www.addleshawgoddard.com](http://www.addleshawgoddard.com) or [www.aglaw.com](http://www.aglaw.com).